

Calculating Points for Each Question

You earn points based on your answer to each question:

- For each “yes” answer, you receive full points.
- For each “partial yes” answer you receive half points.
- For each “no or unknown” answer, you receive zero points.

Levels are Weighted Differently

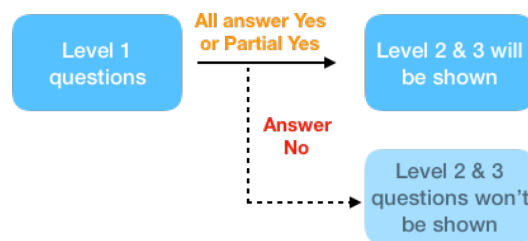
Unlike sections, levels are not weighted equally. Higg weights Level 2 higher than the other levels because this is the level where actions, targets, and reductions are measured. Also, most factories are scoring at Level 1, so we would like to focus points on Level 2 to encourage advancements.

- **Level 1 is worth 25%** of the total possible points. (Unless the applicability questions stop you at Level 1, then Level 1 is worth 100% of total possible points.)
- **Level 2 is worth 50%** of the total possible points.
- **Level 3 is worth 25%** of the total possible points.

Applicability

The new Higg FEM will include qualifier questions to ensure that you only answer questions applicable to your factory type. These questions are called “applicability tests”. You will be asked applicability questions at the start of four sections of the Higg FEM.

For some level 1 questions, if you cannot answer Yes or Partial Yes, you cannot proceed to level 2 and 3. This ensures you successfully demonstrate level 1 practices (the basic requirement), before proceeding to more advanced practices.



Levels Weight and Applicability in Each Section

1. EMS

- 1.1 No applicability
- 1.2 Levels Weight

Level	Question Number	Score/ Question	Level Weight	Total
Level 1	#1 (emsmgmt), #2 (emsstrategy) #3 (emsopsimpact), #4 (emspertitstatus), #5 (emsregulationsystem), #6 (emsequipmaintain)	4.17	25%	100%
Level 2	#7 (emsstrategyreview), #8 (emsmgmtcompetence) #9 (emsstrategyawareness), #10 (emshiggindexsubcontract)	12.5	50%	
Level 3	#11 (emseingagelocal), #12 (emshiggindexupstream)	12.5	25%	

2. Energy Use/GHG

- 2.1 No applicability
- 2.2 Levels Weight

Level	Question Number	Score/ Question	Level Weight	Total
Level 1	#1 (ensourcetrack)	50	50%	100%
Level 2	#2 (enbaselinesource), #3 (enhighestuse) #4 (entargetssource), #5 (enimproveplan) #6 (enimprovesource)	10	50%	
Level 3	#7 (enscope3ghg)	0	0%	

2.3 Explanation

- The reason Level 3 is unscored is because the only Level 3 energy question asks about whether the factory has calculated their Scope 3 GHG emissions. This is unscored because calculating Scope 3 emissions is an advanced data calculation step, but this calculation does not drive sustainability improvement by itself. The sustainability improvements are driven through actions specified in Level 2.

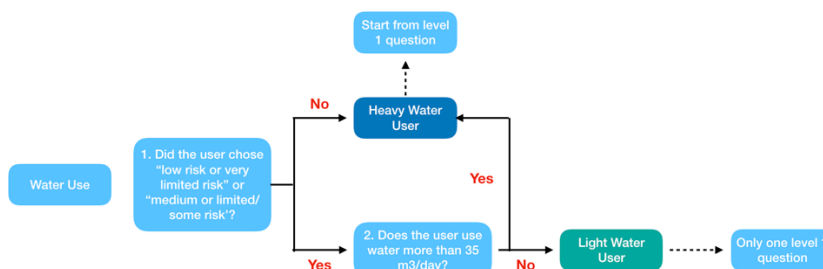
3. Water

3.1 Overview

- Heavy water user
- Light water user

Level	Question Number	Applicability Pathway with Points	
		Heavy Water User	Light Water User
Level 1	#1 (watsources)	25	100
Level 2	#2 (watbaselinesource)	10	
	#3 (wathighestuse)	10	
	#4 (wattargetssource)	10	
	#5 (watimproveplan)	10	
	#6 (watimprovesource)	10	
Level 3	#7 (watbalanceanalysis)	25	
Total		100	100

3.2 Applicability



3.3 Levels Weight

Heavy Water User					Light Water User				
Level	Question Number	Score/Question	Level Weight	Total	Level	Question Number	Score/Question	Level Weight	Total
Level 1	1	25	25%	100%	Level 1	1	100	100%	100%
Level 2	4	10	50%		Level 2	0	0	0	
Level 3	1	25	25%		Level 3	0	0	0	

4. Waste

4.1 No applicability

4.2 Levels Weight

Level	Question Number	Score/Question	Level Weight	Total
Level 1	#1 (wstsourceh), #2 (wstsourceh) #3 (wstsegregatestreams), #4 (wsthstorage), #5 (wstnhstorage), #6 (wstpolhtml) #7 (wsthtrain)	3.57	25%	100%
Level 2	#8 (wstbaseline), #9 (wstbaselinedisp) #10 (wsttarget), #11 (wsttargetdisp) #12 (wstredimpplan), #13 (wstredimp2017) #14(wstredimpdisp)	7.14	50%	
Level 3	#15 (wsthazdispvalidate), #16 (wstdispzerowaste) #17 (wstdispupcycle)	8.33	25%	

5. Wastewater

5.1 Overview

- Zero Discharge Liquid Treatment
- Industrial and Domestic Wastewater Treatment
- Domestic Wastewater Treatment Only

5.1.1 Zero Discharge Liquid Treatment

Level	Question Number	Applicability Pathway with Points	
		Zero liquid discharge	Zero liquid discharge (with ZDHC option)
Level 1	#1 (wwtrackind) #2 (wwtrackdom), or #3 (wwtrackcomb)		
	#4 (wwguidelines)	50	If choose ZDHC option for #4: Level 1 (Foundational): 25
	#5 (wwoffsitetreatplant)		
	#6 (wwemergplan)		
	#7 (wwsludgedisposal) or #8 (wwnhsludgedisposal)		
	#9 (wwsepticwater)		
Level 2	#10 (wwqualitytest)		If choose ZDHC option for the #4 question, Level 2 (Progressive): 50
Level 3	#11 (wwrecycle)	50	If choose ZDHC option for the #4 question, level 3 (Aspirational): 12.5, plus 12.5 for #11 question – total 25
Total		100	100

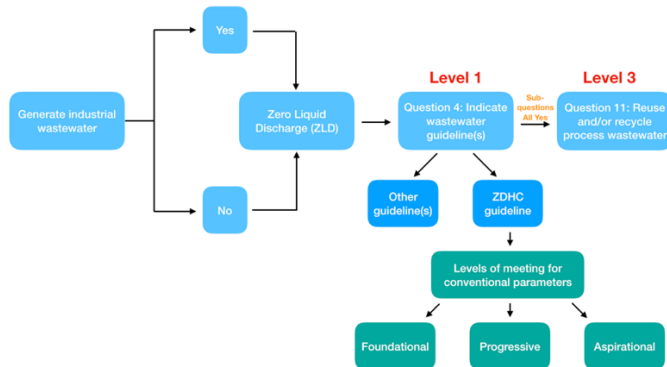
5.1.2 Industrial and Domestic Wastewater Treatment

Level	Question Number	Applicability Pathway with Points											
		Industrial Onsite Separately	Industrial Onsite Together	Industrial Onsite Separately (with ZDHC option)	Industrial Onsite Together (with ZDHC option)	Industrial Offsite Separately	Industrial Offsite Together	Industrial Offsite Separately (with ZDHC option)	Industrial Offsite Together (with ZDHC option)	Industrial Onsite + Offsite Separately	Industrial Onsite + Offsite Together	Industrial Onsite + Offsite Together (with ZDHC option)	Industrial Onsite + Offsite Separately (with ZDHC option)
Level 1	#1 & #2, or #3	#1 & #2 - 12.5	#3 - 12.5	#1 & #2 - 6.25	#3 - 6.25	#1 & #2 - 6.25	#3 - 6.25	#1 & #2 - 6.25	#3 - 6.25	#1 & #2 - 5	#3 - 5	#1 & #2 - 5	#3 - 5
	#4	12.5	12.5	If choose ZDHC option: Level 1 (Foundational): 6.25	If choose ZDHC option: Level 1 (Foundational): 6.25	6.25	6.25	If choose ZDHC option: Level 1 (Foundational): 6.25	If choose ZDHC option: Level 1 (Foundational): 6.25	5	5	If choose ZDHC option: Level 1 (Foundational): 6.25	If choose ZDHC option: Level 1 (Foundational): 6.25
	#5					6.25	6.25	6.25	6.25	5	5	5	5
	#6	12.5	12.5	6.25	6.25	6.25	6.25	6.25	6.25	5	5	5	5
	#7 or #8	#7 - 12.5	#7 - 12.5	#7 - 6.25	#7 - 6.25					#7 - 5	#7 - 5	#7 - 5	#7 - 5
	#9												
Level 2	#10			If choose ZDHC option for the #4 question: Level 2 (Progressive): 50	If choose ZDHC option for the #4 question: Level 2 (Progressive): 50	50	50	If choose ZDHC option for the #4 question: Level 2 (Progressive): 25, plus 25 for #10 question - total 50	If choose ZDHC option for the #4 question: Level 2 (Progressive): 25, plus 25 for #10 question - total 50	50	50	If choose ZDHC option for the #4 question: Level 2 (Progressive): 25, plus 25 for #10 question - total 50	If choose ZDHC option for the #4 question: Level 2 (Progressive): 25, plus 25 for #10 question - total 50
Level 3	#11	50	50	If choose ZDHC option for the #4 question: Level 3 (Aspirational): 12.5, plus 12.5 for #11 question - total 25	If choose ZDHC option for the #4 question: Level 3 (Aspirational): 12.5, plus 12.5 for #11 question - total 25	25	25	If choose ZDHC option for the #4 question: Level 3 (Aspirational): 12.5, plus 12.5 for #11 question - total 25	If choose ZDHC option for the #4 question: Level 3 (Aspirational): 12.5, plus 12.5 for #11 question - total 25	25	25	If choose ZDHC option for the #4 question: Level 3 (Aspirational): 12.5, plus 12.5 for #11 question - total 25	If choose ZDHC option for the #4 question: Level 3 (Aspirational): 12.5, plus 12.5 for #11 question - total 25
Total		100	100	100	100	100	100	100	100	100	100	100	100

5.1.3 Domestic Wastewater Treatment Only

Level	Question Number	Applicability Pathway with Points			
		Domestic Treated Onsite	Domestic Treated Offsite	Domestic Treated Onsite + Offsite	Septic System
Level 1	#1 & #2, or #3				
	#4	50		16.67	
	#5		50	16.67	
	#6				
	#7 or #8	#8 - 50		#8 - 16.67	
	#9				100
Level 2	#10		50	50	
Level 3	#11				
Total		100	100	100	100

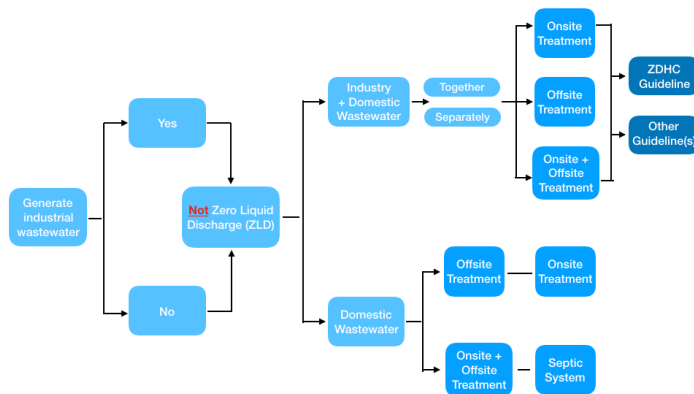
5.1 Zero liquid discharge (ZLD)
 5.2.1 ZLD applicability



5.2.1 Levels Weight

Other Guideline(s)					ZDHC Guideline				
Level	Question Number	Score/ Question	Level Weight	Total	Level	Question Number	Score/ Question	Level Weight	Total
Level 1	#4	50	50%	100%	Level 1	#4 (level 1: Foundational)	25	25%	100%
Level 2	0	0	0		Level 2	#4 (level 2: Progressive)	50	50%	
Level 3	#11	50	50%		Level 3	#4 (level 3: Aspirational) + #11	12.5	25%	

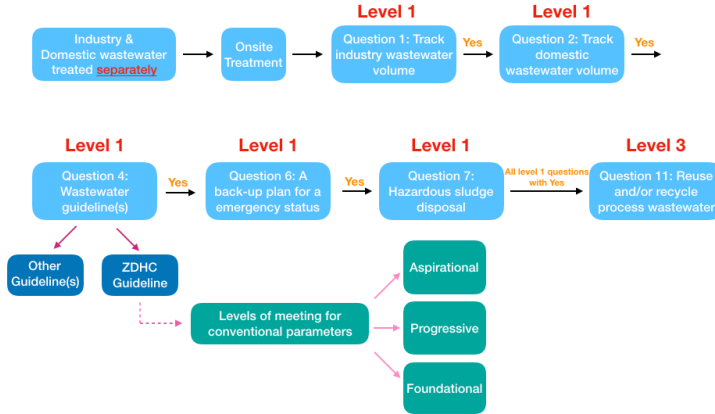
5.3 Wastewater treatment applicability



5.3.1 Industry and domestic wastewater treatment applicability

5.3.1.1 Onsite treatment

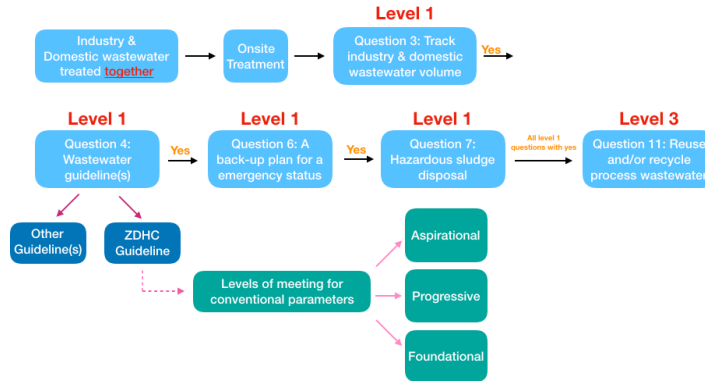
5.3.1.1.1 Onsite treatment (Separately)



5.3.1.1.2 Levels weight – Onsite treatment (separately)

Other Guideline(s)					ZDHC Guideline				
Level	Question Number	Score/Question	Level Weight	Total	Level	Question Number	Score/Question	Level Weight	Total
Level 1	#1 & #2	12.5	12.5%	100%	Level 1	#1 & #2	6.25	6.25%	100%
	#4, #6, #7	12.5	37.5%			#4 (level 1: Foundational)	6.25	6.25%	
Level 2	0	0	0			#6, #7	6.25	12.5%	
Level 3	#11	50	50%	Level 2	#4 (level 2: Progressive)	50	50%		
				Level 3	#4 (level 3: Aspirational) + #11	12.5	25%		

5.3.1.1.3 Onsite treatment (Together)

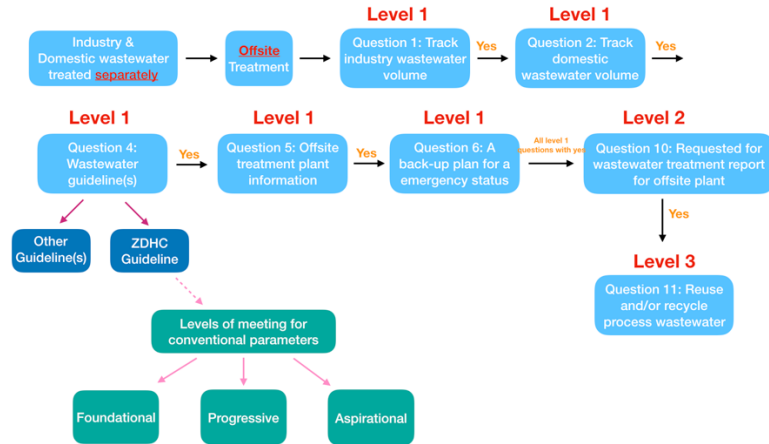


5.3.1.1.4 Levels weight – Onsite treatment (together)

Other Guideline(s)					ZDHC Guideline				
Level	Question Number	Score/Question	Level Weight	Total	Level	Question Number	Score/Question	Level Weight	Total
Level 1	#3, #4, #6, #7	12.5	50%	100%	Level 1	#3, #6, #7	6.25	18.75%	100%
Level 2	0	0	0			#4 (level 1: Foundational)	6.25	6.25%	
						#4 (level 2: Progressive)	50	50%	
Level 3	#11	50	50%	Level 3	#4 (level 3: Aspirational) + #11	12.5	25%		

5.3.1.2 Offsite treatment

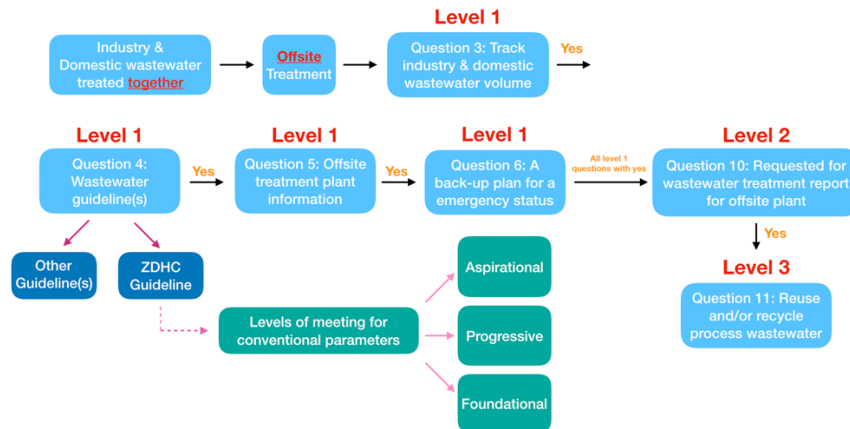
5.3.1.2.1 Offsite treatment (separately)



5.3.1.2.2 Levels weight - offsite treatment (separately)

Other Guideline(s)					ZDHC Guideline				
Level	Question Number	Score/Question	Level Weight	Total	Level	Question Number	Score/Question	Level Weight	Total
Level 1	#1 & #2	6.25	6.25%	100%	Level 1	#1 & #2	6.25	6.25%	100%
Level 2	#4, #5, #6	6.25	18.75%		Level 1	#4 (level 1: Foundational) #5, #6	6.25	12.5%	
Level 3	#11	25	25%		Level 2	#4 (level 2: Progressive) + #10	25	50%	
					Level 3	#4 (level 3: Aspirational) + #11	12.5	25%	

5.3.1.2.3 Offsite treatment (together)

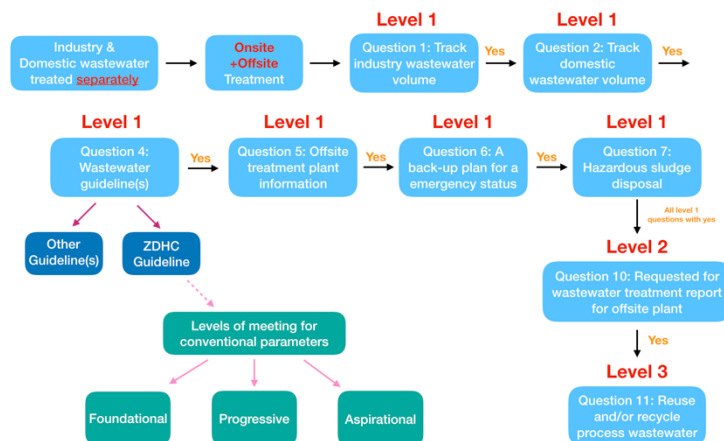


5.3.1.2.4 Levels weight - offsite treatment (together)

Other Guideline(s)					ZDHC Guideline				
Level	Question Number	Score/Question	Level Weight	Total	Level	Question Number	Score/Question	Level Weight	Total
Level 1	#3, #4, #5, #6	6.25	25%	100%	Level 1	#3, #5, #6	6.25	18.75%	100%
Level 2	#10	50	50%		Level 1	#4 (level 1: Foundational)	6.25	6.25%	
Level 3	#11	25	25%		Level 2	#4 (level 2: Progressive) + #10	25	50%	
					Level 3	#4 (level 3: Aspirational) + #11	12.5	25%	

5.3.1.3 Onsite and offsite treatment

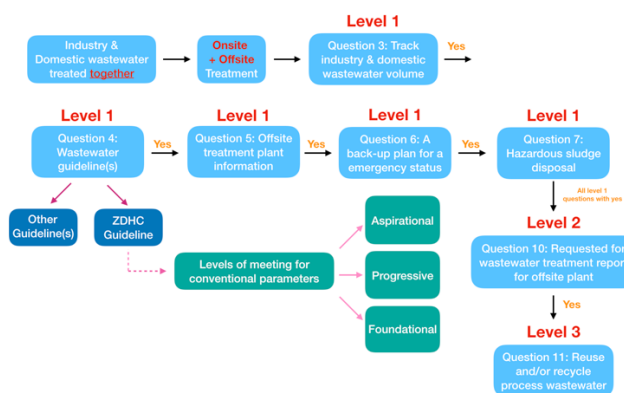
5.3.1.3.1 Onsite and offsite treatment (separately)



5.3.1.3.2 Levels weight - onsite and offsite treatment (separately)

Other Guideline(s)					ZDHC Guideline				
Level	Question Number	Score/Question	Level Weight	Total	Level	Question Number	Score/Question	Level Weight	Total
Level 1	#1 & #2	5	5%	100%	Level 1	#1 & #2	5	5%	100%
Level 1	#4, #5, #6, #7	5	20%		Level 1	#4 (level 1: Foundational)	5	5%	
Level 2	#10	50	50%		Level 2	#5, #6, #7	5	15%	
Level 3	#11	25	25%		Level 2	#4 (level 2: Progressive) + #10	25	50%	
				Level 3	#4 (level 3: Aspirational) + #11	12.5	25%		

5.3.1.3.3 Onsite and offsite treatment (together)

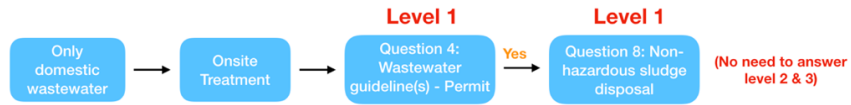


5.3.1.3.4 Level weights - onsite and offsite treatment together

Other Guideline(s)					ZDHC Guideline				
Level	Question Number	Score/Question	Level Weight	Total	Level	Question Number	Score/Question	Level Weight	Total
Level 1	#3, #4, #5, #6, #7	5	25%	100%	Level 1	#3, #5, #6, #7	5	20%	100%
Level 2	#10	50	50%		Level 1	#4 (level 1: Foundational)	5	5%	
Level 3	#11	25	25%		Level 2	#4 (level 2: Progressive) + #10	25	50%	
				Level 3	#4 (level 3: Aspirational) + #11	12.5	25%		

5.3.2 Domestic wastewater treatment applicability

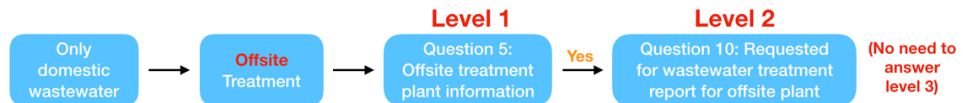
5.3.2.1 Domestic wastewater onsite treatment



5.3.2.2 Level weights - domestic wastewater treatment onsite

Level	Question Number	Score/Question	Level Weight	Total
Level 1	#4, #8	50	100%	100%
Level 2	0	0	0	
Level 3	0	0	0	

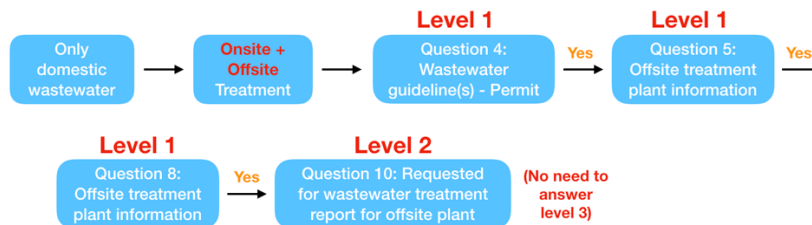
5.2.2.3 Domestic wastewater offsite treatment



5.2.2.4 Levels weight - domestic wastewater offsite treatment

Level	Question Number	Score/Question	Level Weight	Total
Level 1	#5	50	50%	100%
Level 2	#10	50	50%	
Level 3	0	0	0	

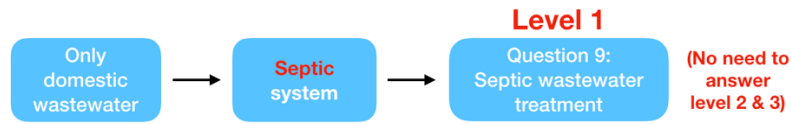
5.2.2.5 Domestic wastewater onsite and offsite treatment



5.2.2.6 Levels weight - domestic wastewater onsite and offsite treatment

Level	Question Number	Score/Question	Level Weight	Total
Level 1	#4, #5, #8	16.67	50%	100%
Level 2	#10	50	50%	
Level 3	0	0	0	

5.2.2.7 Domestic wastewater with a septic system



5.2.2.8 Levels weight - domestic wastewater with a septic system

Level	Question Number	Score/Question	Level Weight	Total
Level 1	#9	100	100%	
Level 2	0	0	0	100%
Level 3	0	0	0	

6 Air Emission

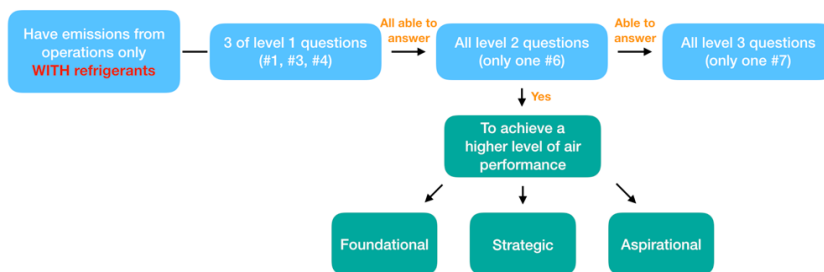
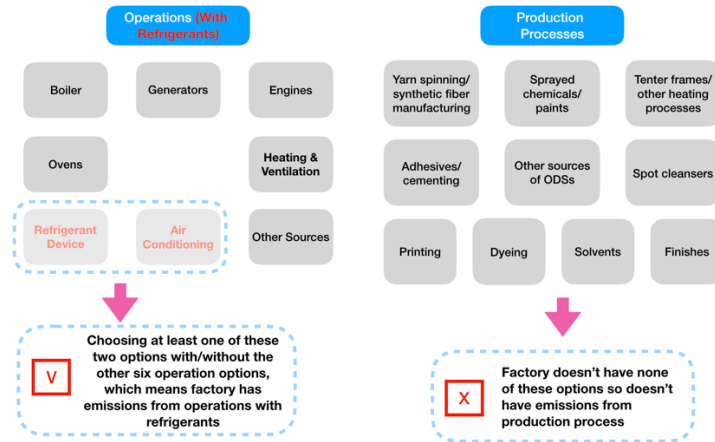
6.1 Overview

- Emissions from operations
- Emissions from production
- Emissions from both operations and production

Level	Question Number	Applicability Pathway with Points				
		Emissions from operations		Emissions from production	Emissions from both operations and production	
		Emissions from operations only WITH refrigerants	Emissions from operations only WITH refrigerants	Emissions from production only	Emissions from operations and production only WITH refrigerants	Emissions from operations and production only WITH OUT refrigerants
Level 1	#1 (airsourceopstrack)	8.3	12.5		5	6.3
	#2 (airsourceprodtrack)			25	5	6.3
	#3 (airsourcefrignew)	8.3			5	
	#4 (aircontroldevopshhtml)	8.3	12.5		5	6.3
	#5 (aircontroldevprodhtml)			25	5	6.3
Level 2	#6 (airbeyondpermit)	If choose Level 1 (Foundational) option: the total score of level 1 questions will be kept as 25. If choose Level 2 (Strategic) option: 50	If choose Level 1 (Foundational) option: the total score of level 1 questions will be kept as 25. If choose Level 2 (Strategic) option: 50		If choose Level 1 (Foundational) option: the total score of level 1 questions will be kept as 25. If choose Level 2 (Strategic) option: 50	If choose Level 1 (Foundational) option: the total score of level 1 questions will be kept as 25. If choose Level 2 (Strategic) option: 50
Level 3	#7 (airimplementprocess)	If choose Level 3 (Aspirational) for the #6 question: 12.5, plus 12.5 for the #7 question – total 25	If choose Level 3 (Aspirational) for the #6 question: 12.5, plus 12.5 for the #7 question – total 25	50	If choose Level 3 (Aspirational) for the #6 question: 12.5, plus 12.5 for the #7 question – total 25	If choose Level 3 (Aspirational) for the #6 question: 12.5, plus 12.5 for the #7 question – total 25
Total		100	100	100	100	100

6.2 Emissions from operations only with refrigerants

6.2.1 Applicability

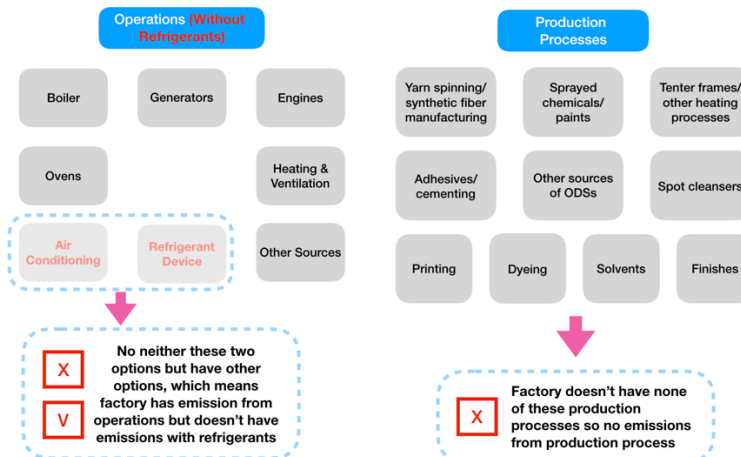


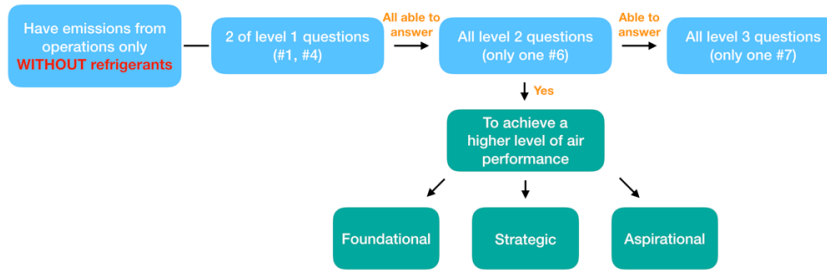
6.2.2 Levels weight - emissions from operations only with refrigerants

Level	Question Number	Score/Question	Level Weight	Total
Level 1	#1, #3, #4	8.3	25%	
Level 2	#6 (level 1: Foundational)	/	/	100%
	#6 (level 2: Strategic)	50	50%	
Level 3	#6 (level 3: Aspirational) + #7	12.5	25%	

6.3 Emissions from operations only without refrigerants

6.3.1 Applicability



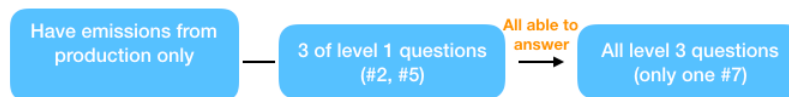
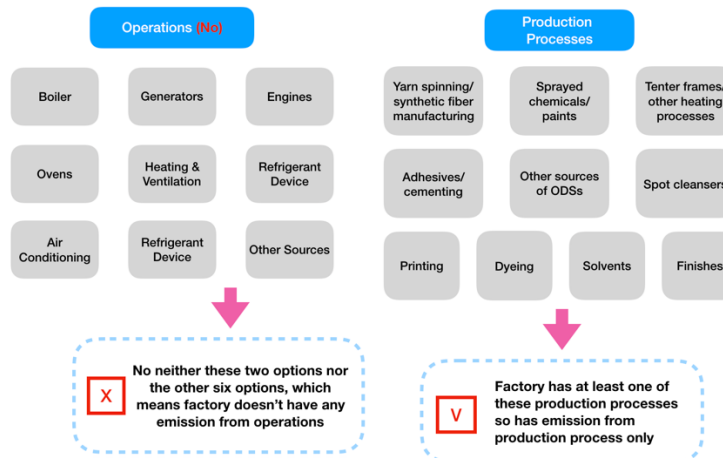


6.3.2 Levels weight - emissions from operations only without refrigerants

Level	Question Number	Score/Question	Level Weight	Total
Level 1	#1, #4	12.5	25%	100%
Level 2	#6 (level 1: Foundational)	/	/	
	#6 (level 2: Strategic)	50	50%	
Level 3	#6 (level 3: Aspirational) + #7	12.5	25%	

6.4 Emissions from **production only**

6.4.1 Applicability

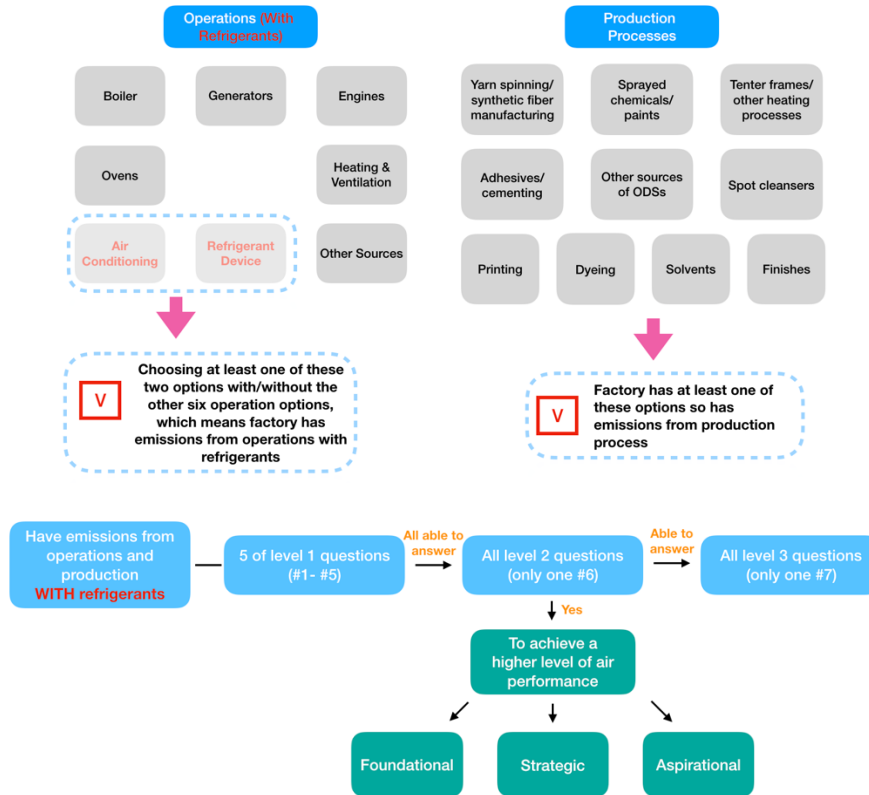


6.4.2 Levels weight - emissions from production only

Level	Question Number	Score/Question	Level Weight	Total
Level 1	#2, #5	25	50%	100%
Level 2	0	0	0	
Level 3	#7	50	50%	

6.5 Emissions from operations and production with refrigerants

6.5.1 Applicability

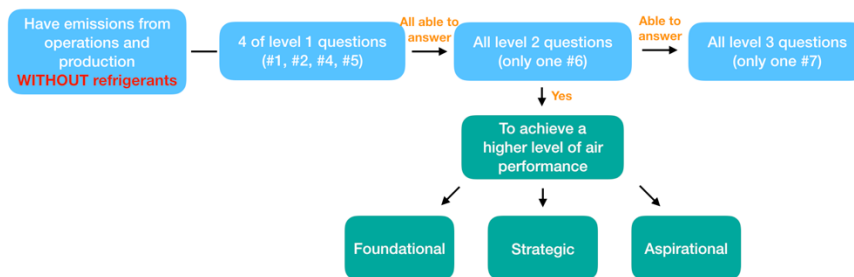
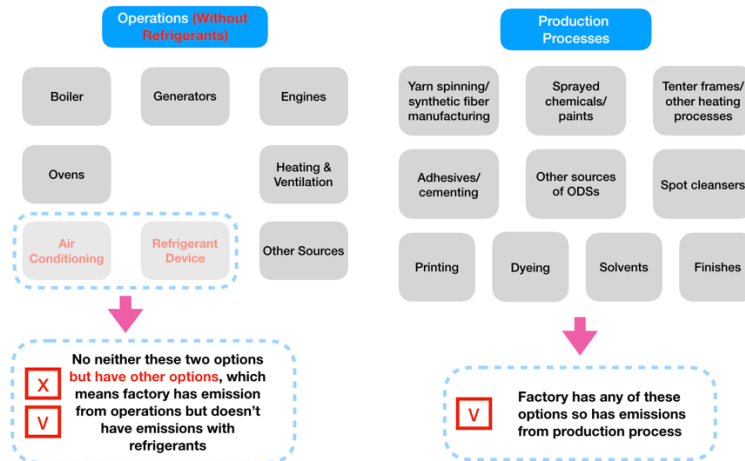


6.5.2 Levels weight - emissions from operations and production with refrigerants

Level	Question Number	Score/ Question	Level Weight	Total
Level 1	#1, #4	12.5	25%	100%
Level 2	#6 (level 1: Foundational)	/	/	
	#6 (level 2: Strategic)	50	50%	
Level 3	#6 (level 3: Aspirational) + #7	12.5	25%	

6.6 Emissions from operations and production without refrigerants

6.6.1 Applicability



6.6.2 Levels weight - emissions from operations and production without refrigerants

Level	Question Number	Score/ Question	Level Weight	Total
Level 1	4 (#1, #2, #4, #5)	6.25	25%	100%
Level 2	#6 (level 1: Foundational)	/	/	
	#6 (level 2: Strategic)	50	50%	
Level 3	#6 (level 3: Aspirational) + #7	12.5	25%	

7 Chemical Management

7.1 Overview

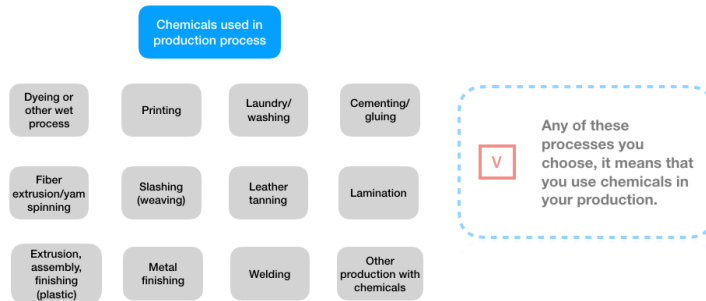
- Chemicals used in production process
- No chemicals used in production process (No N/A selected)
- No chemicals used in production process (N/A selected for question 2)

Level	Question Number	Applicability Pathway with Points		
		Chemicals used in production process	No chemicals used in production process (No N/A selected)	No chemicals used in production process (N/A selected for question 2)
Level 1	#1 (chemtrack)	1.923	2.78	3.125
	#2 (chemsds)	1.923	2.78	N/A
	#3 (chemtraining)	1.923	2.78	3.125
	#4 (chememergplan)	1.923	2.78	3.125
	#5 (chemsafetyequip)	1.923	2.78	3.125
	#6 (chemhazardsign)	1.923	2.78	3.125

	#7 (chempurchaseeq)	1.923	2.78	3.125
	#8 (chemhealthprogram)	1.923	2.78	3.125
	#9 (chemstorage)	1.923	2.78	3.125
	#10 (chemtrainingRSL)	1.923		
	#11 (chemprocessidentifyRSL)	1.923		
	#12 (chemprocessmonitorRSL)	1.923		
	#13 (chemtraceinventory)	1.923		
Level 2	#14 (chemimproveplan)	16.67	16.67	16.67
	#15 (chemreduceplan)	16.67	16.67	16.67
	#16 (chemsourcelist)	16.67	16.67	16.67
Level 3	#17 (chemcollabalternatives)	3.57	25	25
	#18 (chemtracelotnumber)	3.57		
	#19 (chemanalysisishumanenv)	3.57		
	#20 (chemanalysislifecycle)	3.57		
	#21 (chemdocumentedoa)	3.57		
	#22 (chemcontractorsRSL)	3.57		
	#23 (chemdocumentedgoals)	3.57		
	Total	100	100	100

7.2 Chemicals used in production process

7.2.1 Applicability: will need to answer all questions in each level.



7.2.2 Levels weight for chemicals used in production process

Level	Question Number	Score/Question	Level Weight	Total
Level 1	13	1.923	25%	100%
Level 2	3	16.67	50%	
Level 3	7	3.57	25%	

7.3 Chemicals are not used in production process and no N/A is selected for the answer.

7.3.1 Applicability: will answer the #1-#9 questions of level 1, all level 2 questions and the #17 question of level 3.

Chemicals is not used in production process (No N/A selected for the answer)

Dyeing or other wet process	Printing	Laundry/ washing	Cementing/ gluing
Fiber extrusion/yarn spinning	Slashing (weaving)	Leather tanning	Lamination
Extrusion, assembly, finishing (plastic)	Metal finishing	Welding	Other production with chemicals

X Factory doesn't have none of these processes.

7.3.2 Levels weight for chemicals used in production process (No N/A is selected)

Level	Question Number	Score/Question	Level Weight	Total
Level 1	9	2.78	25%	100%
Level 2	3	16.67	50%	
Level 3	1	25	25%	

7.4 Chemicals are not used in production process and N/A is selected for the #2 question

7.4.1 Applicability: will answer the #1-#9 questions of level 1, all level 2 questions and the #17 question of level 3.

Chemicals not used in production process (N/A is selected for the #2 question)

Dyeing or other wet process	Printing	Laundry/ washing	Cementing/ gluing
Fiber extrusion/yarn spinning	Slashing (weaving)	Leather tanning	Lamination
Extrusion, assembly, finishing (plastic)	Metal finishing	Welding	Other production with chemicals

X Factory has none of these processes.

#2 - Safety Data Sheets (SDS) available to employees for all chemicals used

A. Yes
 B. Partial Yes
 C. No
 D. Unknown
 E. Not Applicable

7.4.2 Levels weight for chemicals used in production process (N/A is selected for #2 question)

Level	Question Number	Score/Question	Level Weight	Total
Level 1	8 (#1, #3 - #9)	3.125	25%	100%
	1 (#2)	N/A	0	
Level 2	3	16.67	50%	
Level 3	1	25	25%	